

CIRCULAR END CAP – ZAO

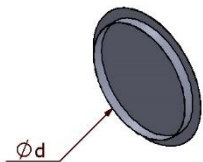
Description:

End caps are used for closing ducts. The end cap is made of galvanized steel.



Characteristics:

Sheet type: galvanized
 Connection method: seam lock, spot weld
 Standard design: –
 Endings: male
 Leakproofness standard: Class A



Sample manufactured element dimensions:

Ød (mm)
100
125
160
200
250
315
355
400
450
500
560
630