

# FEMALE CONNECTOR – M

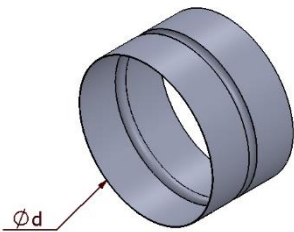
## Description:

Female connectors are used for connecting circular ductwork fittings. Available as gasketed and non-gasketed versions.

## Characteristics:

Sheet type: galvanized

Connection method: spot weld



## Sample manufactured element dimensions:

$\varnothing d$ (mm)
80
100
125
160
200
250
315
355
400
450
500
630