

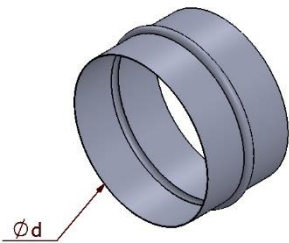
MALE CONNECTOR – N

Description:

Male connectors are used for connecting circular duct pipes.
Available as gasketed and non-gasketed versions.

Characteristics:

Sheet type: galvanized
Connection method: spot weld



Sample manufactured element dimensions:

$\varnothing d$ (mm)
80
100
125
160
200
250
315
355
400
450
500
630