

RECTANGULAR ASYMMETRIC OFFSET – EA

Description:

Offsets are provided with frames made of profiles at the edges and are stiffened with transverse sheet corrugation. Variable cross-section offsets are used for clearing obstacles along the airduct route, while changing the ductwork height.

Characteristics:

Measurement: DIN 18379

Sheet type: galvanized

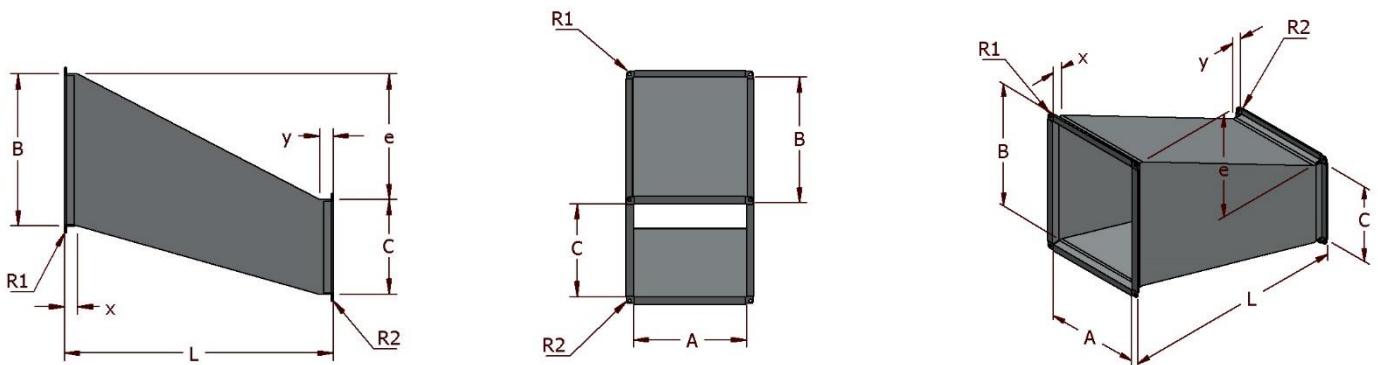
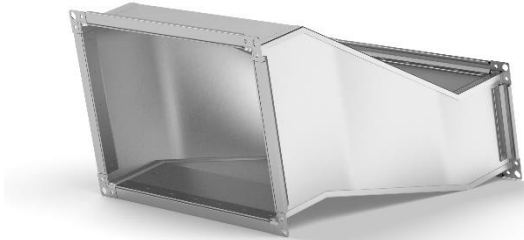
Connection method: seam lock, spot weld

Standard design: $x = 30 \text{ mm}$, $y = 30 \text{ mm}$

Endings: P20, P20 LR, P30, P30 LR, bare end, outward bending

Leakproofness standard: Class A, Class B, Class C

Stiffeners: available in larger dimensions



Sample manufactured element dimensions:

A (mm)	B (mm)	C (mm)	e (mm)	L (mm)	Area (m ²)
200	200	300	150	500	1.00
300	300	400	200	500	1.00
400	400	600	300	500	1.41
500	400	500	200	500	1.17
600	700	800	100	500	1.51
700	700	800	200	600	2.01
800	800	1000	300	700	3.10
1000	1000	1200	300	700	3.79
2000	2000	2400	250	1200	12.01