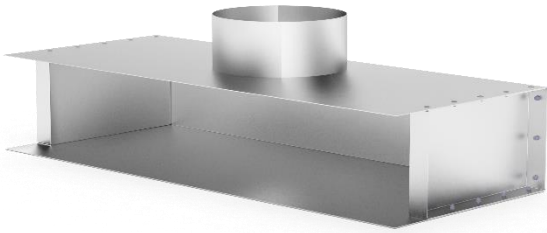


# LINEAR DIFFUSER PLENUM BOX – PR-NL

## Description:

Plenum boxes are connection fittings for the linear diffuser and flexible ducts, creating a ventilation distribution system. The plenum box is made of galvanized metal sheets. At the base, it has a male-sized connection.



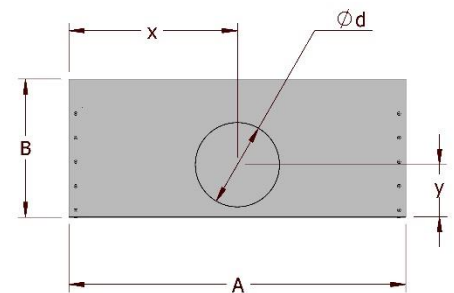
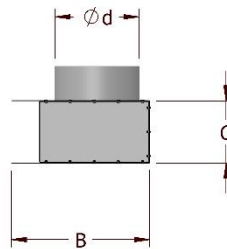
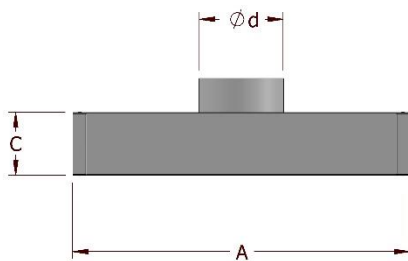
## Characteristics:

Sheet type: galvanized

Connection method: seam lock, spot weld, rivets

Standard design:  $y = \varnothing d / 2 + 20$  mm

Leakproofness standard: Class A, Class B



## Sample manufactured element dimensions:

A (mm)	B (mm)	C (mm)	Ød (mm)	x (mm)	y (mm)
490	200	45	125	245	82
490	200	90	160	245	100
985	200	90	160	492	100
985	250	140	200	492	120
985	250	185	200	492	120