

# ROOF BASE – PDB3

## Description:

The roof base is used for installing a circular roof air intake/exhaust on a rectangular roof curb. The upper part of the roof base terminates with a circular flange, male or female ending. Below the base drip cap, there is a duct to be connected with another duct, sunk into the roof curb. At the bottom of the base, there is a damper for air flow control.

## Characteristics:

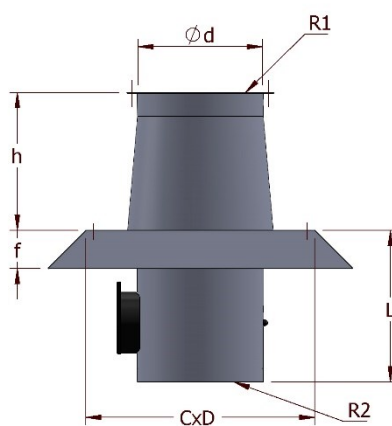
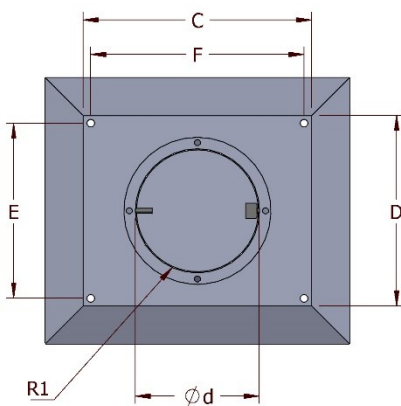
Sheet type: galvanized

Connection method: seam lock, spot weld

Standard design:  $E = D - 50$  mm,  $F = C - 50$  mm,  $f = 50$  mm,  $h = 200$  mm,  $L = 800$  mm

Endings: male, female, flange

Leakproofness standard: Class A, Class B, Class C



## Sample manufactured element dimensions:

C (mm)	D (mm)	E (mm)	F (mm)	$\phi d$ (mm)	f (mm)	h (mm)	L (mm)
360	360	310	310	200	50	200	800
410	410	360	360	250	50	200	800
475	475	425	425	315	50	200	800
515	515	465	465	355	50	200	800
560	560	510	510	400	50	200	800
610	610	560	560	450	50	200	800
790	790	740	740	630	50	200	800
870	870	820	820	710	50	200	800